

Procedure Driver A-421 WINDOWS 8/10

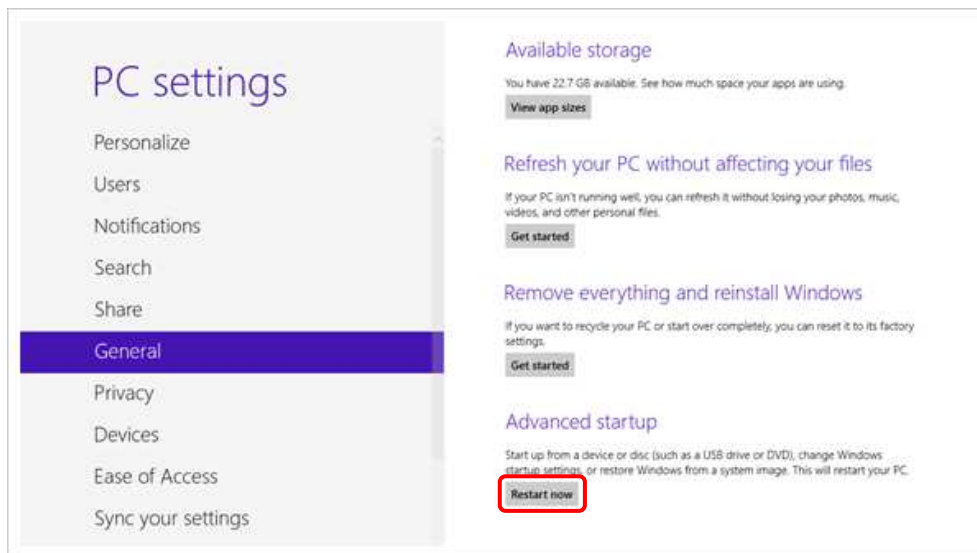
This guide is useful to correctly install the drivers of the interface A-421 on computers with operating system Windows 8/10.

For the correct installation, first of all, set windows so that to be able to allow the configuration of device that use not signed drivers, after that, it will be possible to go on with the procedure of installation of the driver.

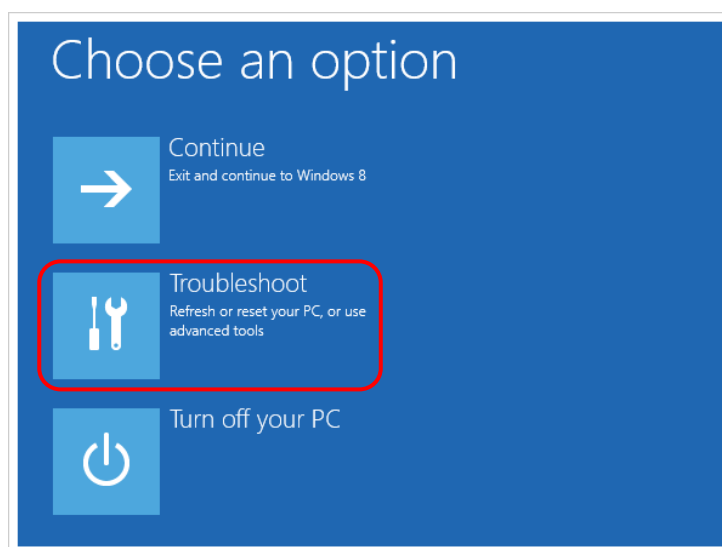
1. WINDOWS CONFIGURATION

First, open the charm bar (press **win + I** to launch this), and click **Change PC Settings** at the bottom. Then, go to **General**, and scroll to the bottom of the page, click **Restart Now** button under **Advanced Startup** section.

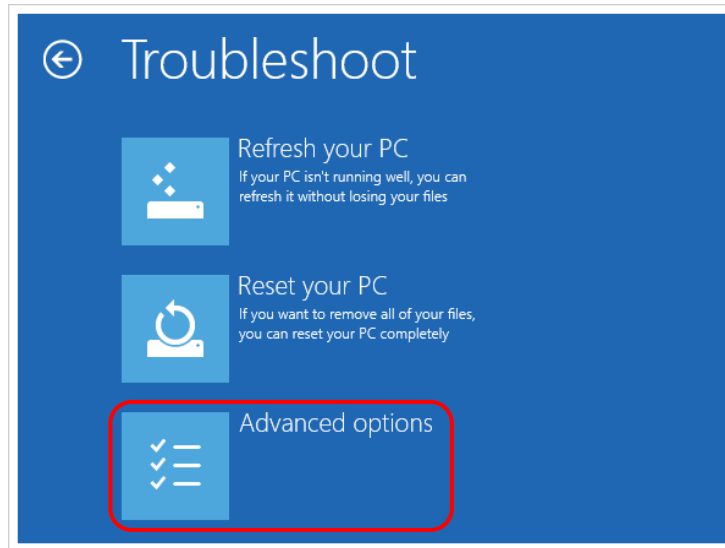
Remember to save all your work first before clicking it.



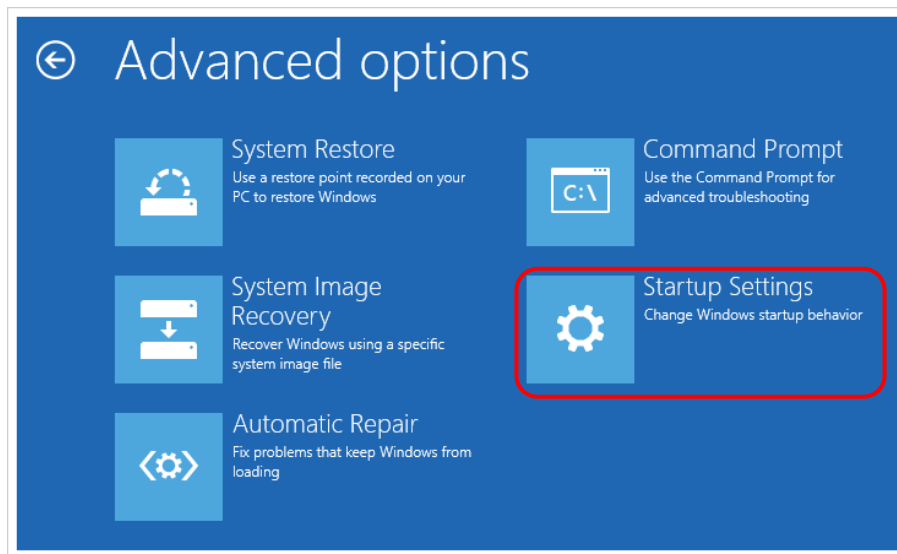
The computer reboots to a startup menu, in which click **Troubleshoot**.



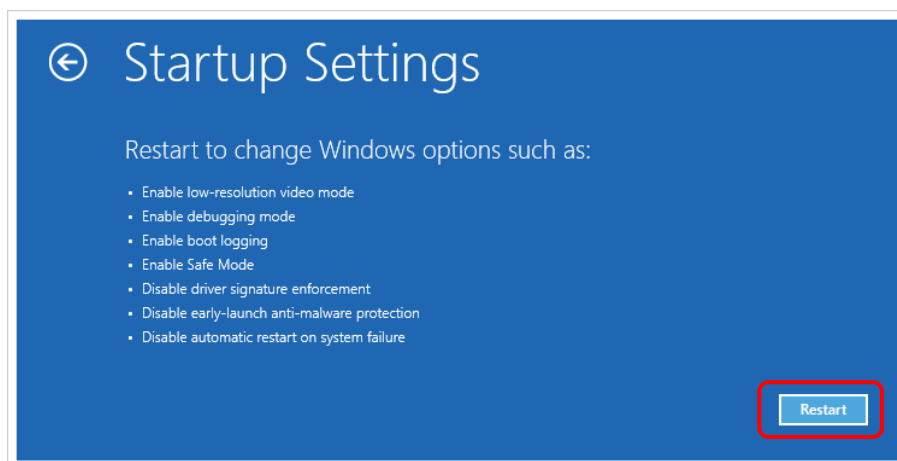
And click **Advanced Options** at next screen.



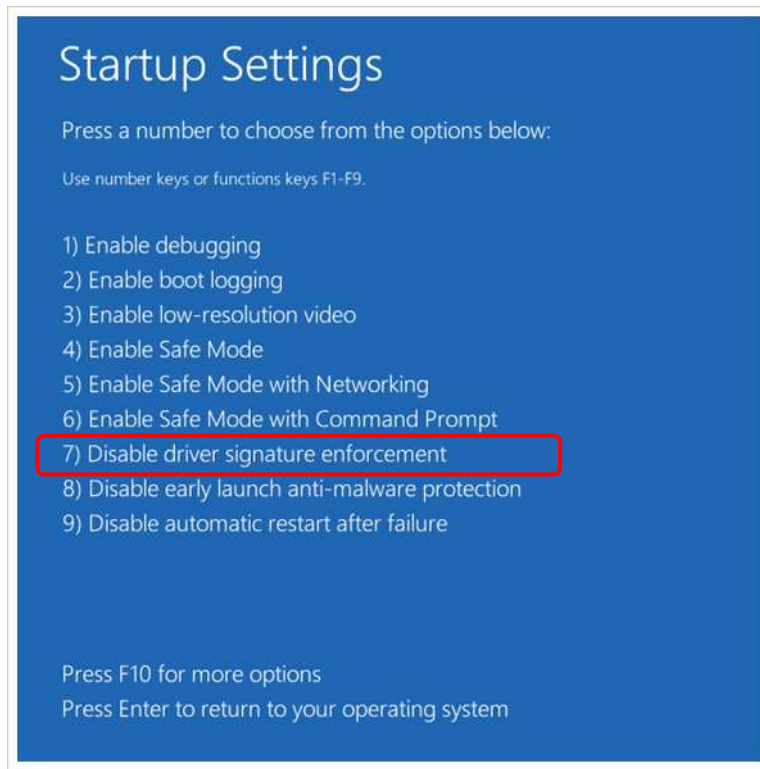
Choose **Startup Settings** next.



And click **Restart** button.



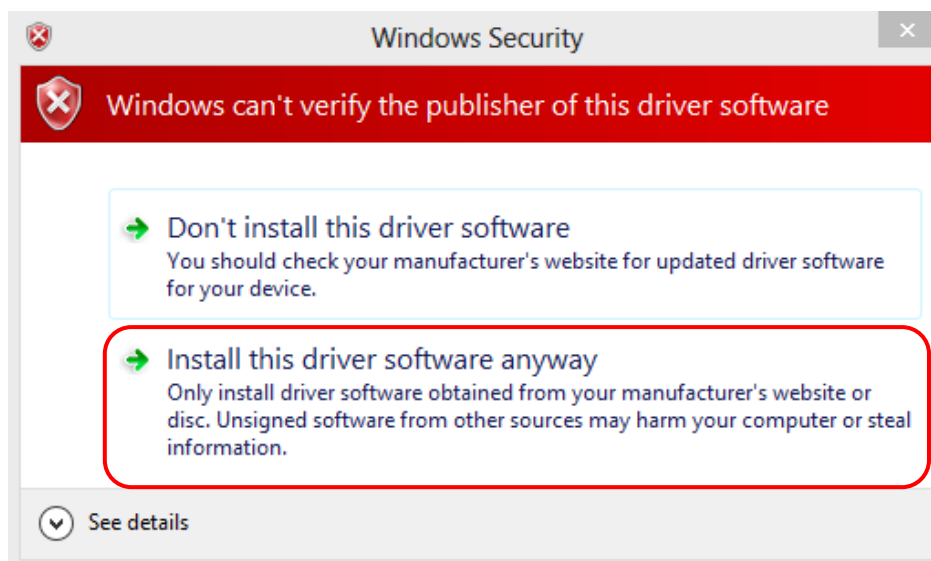
The computer reboots and prompts another menu to choose. One of the items is to **Disable driver signature enforcement**. Press number 7 or F7 to continue booting to Windows 8 with digital sign enforcement disabled.



2. DRIVER INSTALLATION

Now you can proceed with installing the driver.

And then you will be able to get the Windows Security warning window offering you to **Install this driver software anyway**.



It was successful! Restart computer once again to re-enable the digital sign enforcement.